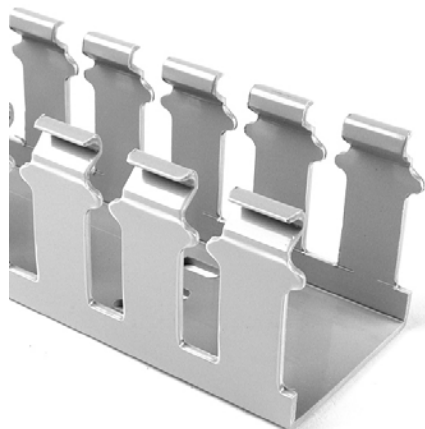


Specification Sheet

Part Number: 181-44027



Slotted Wall Wiring Duct, 4" x 4", Non-Adhesive, PVC, Gray, 120ft/Carton

Article Number	181-44027
Type	SL4X4
Color	Gray (GY)
Features & Benefits	<ul style="list-style-type: none">•Strong fingers prevent unwanted breaking.•Fingers are easily deflected outward, allowing ready positioning of the wires within the slotted wall duct.•Restricted opening design in the finger of the duct helps keep wires in place.•Restricted opening prevents unintended removal of wires and permits any individual wire to be traced without disconnection.•Supplied with mounting holes to streamline installation.•Optional covers enhance protection and appearance.
Quantity Per	carton

Product Description

Pro-Duct slotted wall wiring duct features break-away fingers which provide additional access for wire leads. Each section of the duct is provided with two score lines. The upper score line is used to break away fingers when a greater opening is required. The lower score line allows the sidewall to be smoothly cut for joints and Ts.

Short Description

Slotted Wall Wiring Duct, 4" x 4", Non-Adhesive, PVC, Gray, 120ft/Carton

Global Part Name

SL4X4-PVC-GY

Technical Description

Non-Adhesive

Length L (Imperial)

6.0

Length L (Metric)

1.83

Width W (Imperial)

4.0

Width W (Metric)

101.6

Height H (Imperial)

4.07

Height H (Metric)

103.4

Mounting Hole Centers (Imperial)

4.0

Material

Polyvinylchloride (PVC)

Material Shortcut

PVC

Flammability

Self-Extinguishing

Halogen free No

Operating Temperature (Metric) +122°F (+50°C)

Reach Complaint(Article 33) No

ROHS Complaint Yes

Certification/Specification WEB UL EN 50085-2-3_1A EN 50085-1:2005 + A1:2013 CSA

UL Recognized (US) Yes

Package Quantity(Imperial) 120

Package Quantity (Metric) 36.58

Customs Number 3925900000